



INDOFINE Chemical Company, Inc.

121 Stryker Lane, Bldg. 30, Suite 1 • Hillsborough, NJ 08844 • U.S.A.

Phone: (908) 359-6778 • FAX: (908) 359-1179

website: www.indofinechemical.com

e-mail: chemical@indofinechemical.com

CERTIFICATE OF ANALYSIS

Cat No.: 19-507

Product: 2',4',6'-TRIMETHOXYCHALCONE

Lot Number: 0205123

Chemical Formula: C₁₈H₁₈O₄

Molecular Weight: 298.34

Melting Point: 79-81°C

Appearance: Pale yellow crystalline powder

TLC: Hexane:Ethyl acetate (7:3)

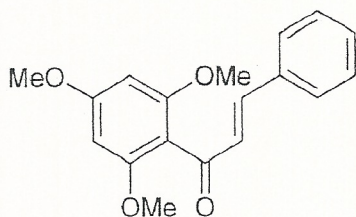
Solubility: Soluble in Chloroform

Storage: Cool dry place

NMR Spectrum: Enclosed

IR Spectrum: Enclosed

Purity(HPLC): 98.86%





INDOFINE Chemical Company, Inc.

121 Stryker Lane, Bldg. 30, Suite 1 • Hillsborough, NJ 08844 • U.S.A.

Phone: (908) 359-6778 • FAX: (908) 359-1179

website: www.indofinechemical.com

e-mail: chemical@indofinechemical.com

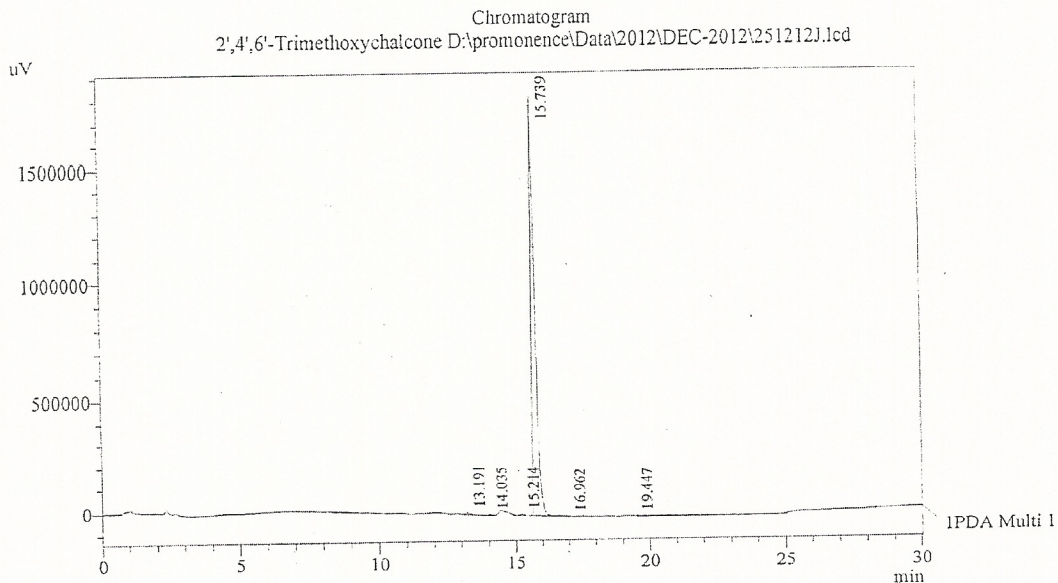
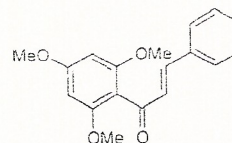
HPLC ANALYSIS

Acquired by : Sanjeev
 Sample Name : 2',4',6'-Trimethoxychalcone
 Sample ID : Lot No:-0205123
 Injection Volume : 20 uL
 Data Filename : 251212J.lcd
 Method Filename : Linear Gradient.M.lcm

Catalog no.: 19-507
 Product name: 2',4',6'-Trimethoxychalcone
 Lot No.: 0205123

Column : LUNA C-18(2), (250mm x4.6mm 5.0µ)
 Flow : 1.000 mL/min.
 Mobile Phase : A(0.05% TFA in water) B(Acetonitrile)

0.01	90	10
12.0	10	90
20.0	10	90
23.0	90	10
30.0	90	10



1 PDA Multi 1 / 225nm 4nm

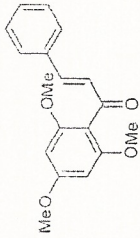
PeakTable

Peak#	Name	Ret. Time	Area	Area %	Relative Retention Time
1	RT:13.191	13.191	88458	0.49	0.84
2	RT:14.035	14.035	37791	0.21	0.89
3	RT:15.214	15.214	71825	0.40	0.97
4	2',4',6'-Trimethoxychalcone	15.739	17939156	98.86	1.00
5	RT:16.962	16.962	4889	0.03	1.08
6	RT:19.447	19.447	4458	0.02	1.24
Total			18146556	100.00	



INDOFINE Chemical Company, Inc.
 121 STRYKER LANE
 BLDG. 30, SUITE 1
 HILLSBOROUGH, NJ 08844

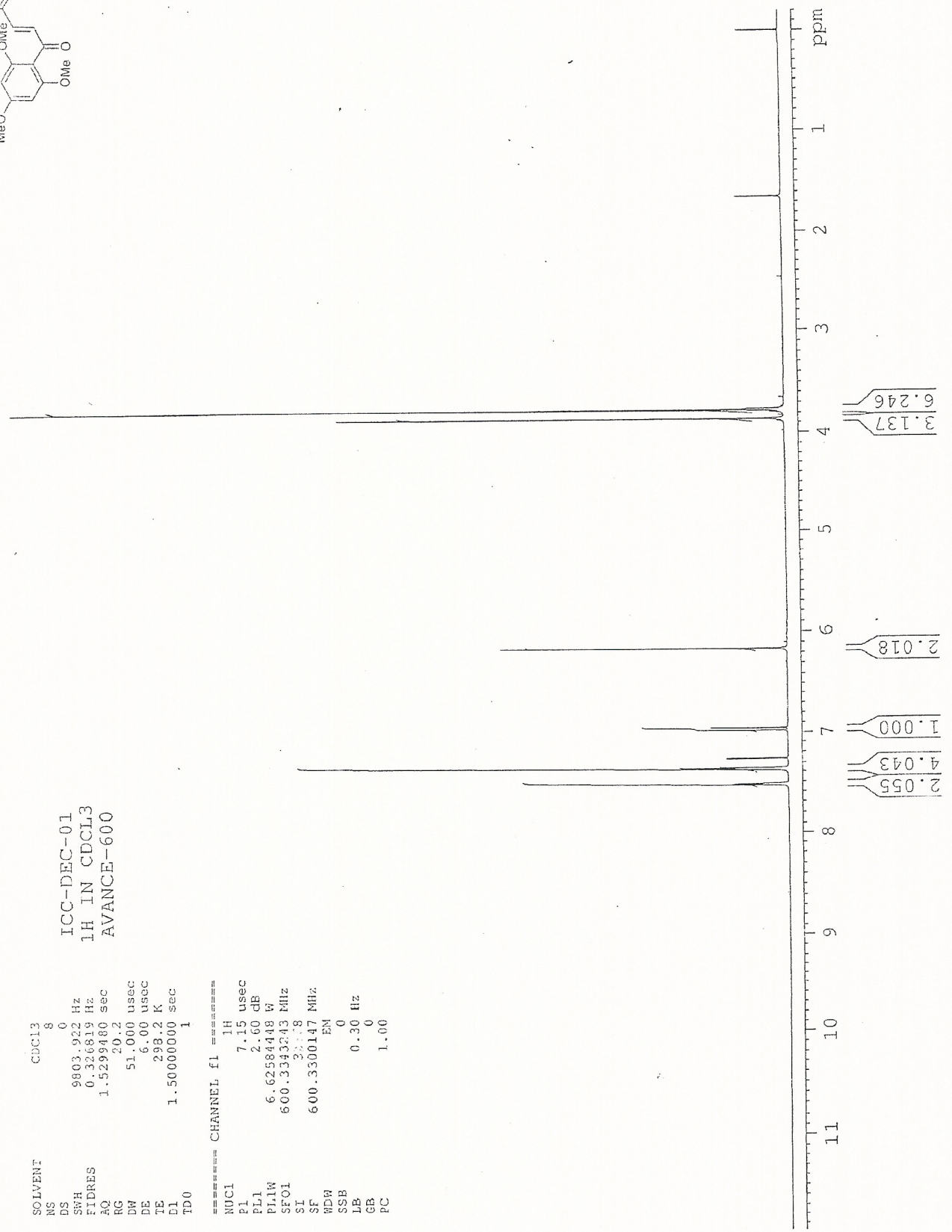
Catalog no.: 19-507
 Product name: 2',4',6'-Trimethoxychalcone
 Lot No.: 0205123



SOLVENT CDC13
 NS 8
 DS 0
 SWH 9802.922 Hz
 FIDRES 0.326819 Hz
 AQ 1.5299480 sec
 RG 20.2
 DW 51.000 usec
 DE 6.00 usec
 TE 298.2 K
 D1 1.50000000 sec
 TD0 1

ICC-DEC-01
 1H IN CDCL3
 AVANCE-600

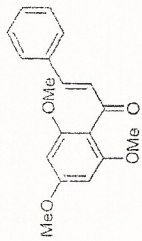
==== CHANNEL f1 =====
 NUCL 1H
 P1 7.15 usec
 FL1 2.60 dB
 PL1W 6.62584418 W
 SFO1 600.3343243 MHz
 ST 2.008
 SF 600.3300147 MHz
 EDW EN
 SSB 0
 LB 0.30 Hz
 GB 0
 PC 1.00





INDOFINE Chemical Company, Inc.
 121 STRYKER LANE
 BLDG. 30, SUITE 1
 HILLSBOROUGH, NJ 08844

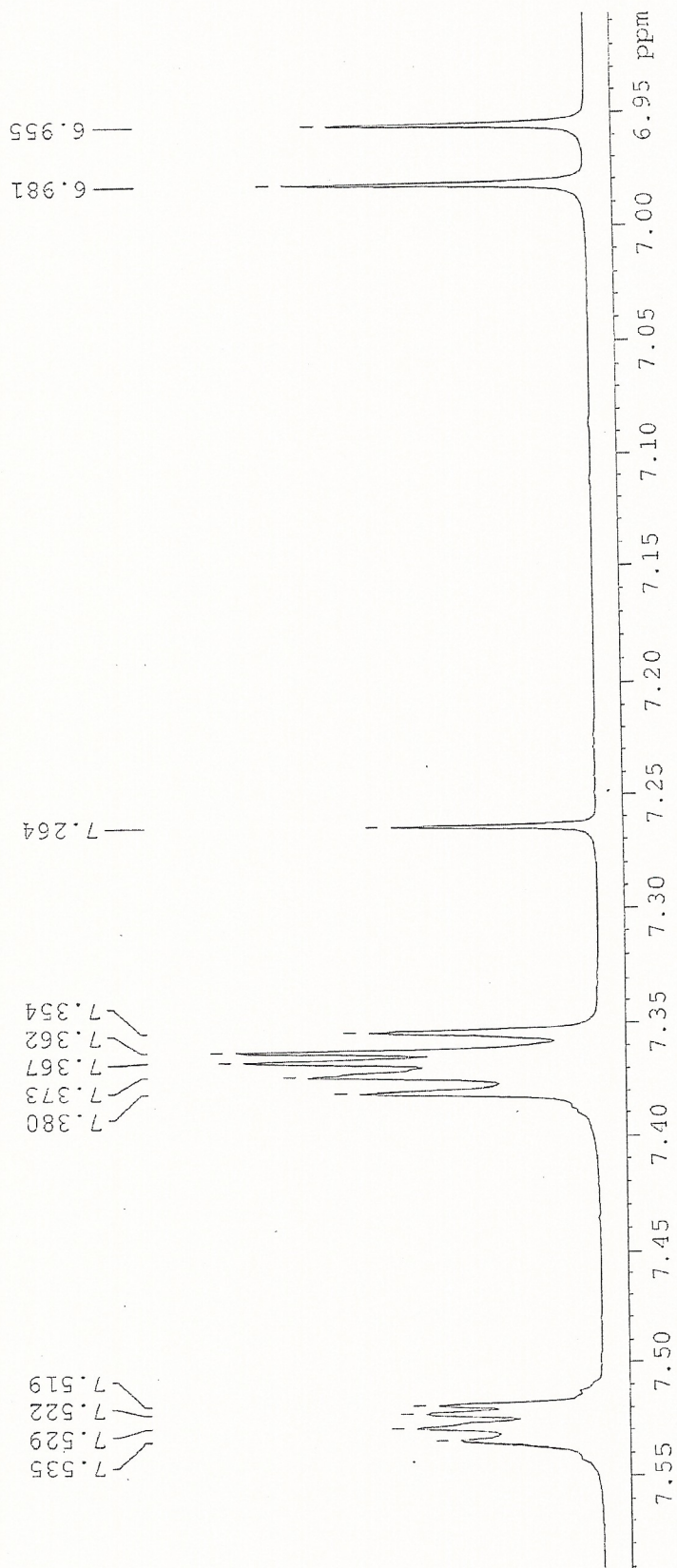
Catalog no.: 19-507
 Product name: 2',4',6'-Trimethoxychalcone
 Lot No.: 0205123

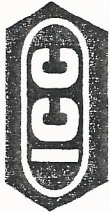


ICC-DEC-01
 1H IN CDCL3
 AVANCE-600

SOLVENT CDCL3
 NS 8
 DS 0
 SWH 9803.922 Hz
 FIDRES 0.326819 Hz
 AQ 1.5299480 sec
 RG 20.2
 DW 51.000 usec
 DE 6.00 usec
 TE 298.2 K
 DI 1.5000000 sec
 TDO 1

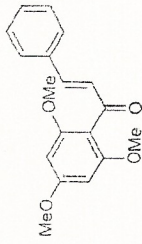
===== CHANNEL f1 =====
 NUC1 1H
 P1 7.15 usec
 PL1 2.60 dB
 PL1W 6.62584448 W
 SF01 600.3343243 MHz
 S1 32768
 SF 600.3300147 MHz
 KDW EM
 SSE 0
 LLE 0.30 Hz
 GB 0
 PC 1.00





INDOFINE Chemical Company, Inc.
 121 STRYKER LANE
 BLDG. 30, SUITE 1
 HILLSBOROUGH, NJ 08844

Catalog no.: 19-507
 Product name: 2',4',6'-Trimethoxychalcone
 Lot No.: 0205123



SOLVENT CDCL3
 NS 8
 DS 0
 SWH 9803.922 Hz
 FIDRES 0.326819 Hz
 AQ 1.5299480 sec
 RG 20.2
 DW 51.000 usec
 DE 6.00 usec
 TE 298.2 K
 D1 1.50000000 sec
 TD0 1

ICC-DEC-01
 1H IN CDCL3
 AVANCE-600

==== CHANNEL f1 =====
 NUC1 1H
 P1 7.15 usec
 PL1 2.60 dB
 PL1W 6.62584448 W
 SFO1 600.3343243 MHz
 SI 32768
 SF 600.3300147 MHz
 WDW EM
 SSE 0
 LB 0.30 Hz
 GB 0
 PC 1.00

